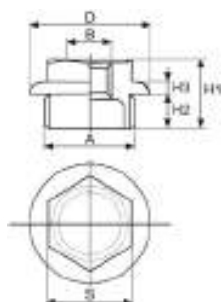


G 10 11






401/56

TAPPO ZINCATO SERIE 1"1/4 CON FLANGIA Ø 56

- GALVANIZED PLUG RANGE 1" 1/4 WITH Ø 56 FLANGE
- VERZINKT STAHLSTOPFEN 1" 1/4 MIT FLANSCH Ø 56
- BOUCHON RADIATEURS GALVANISÉ, SERIE 1" 1/4 BRIDE Ø 56
- TAPÓN GALVANIZADO SERIE 1" 1/4 CON BRIDA Ø 56

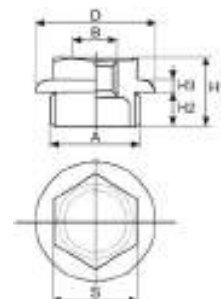
THREAD: ISO 228/1 (ex DIN 259)
USE: radiatori ghisa / tubolari
 cast iron / tubular radiators

RECOMMENDED SEAL: senza amianto
 asbestos free
 art. 950/A sp. 2 mm

CODE	A inch	B inch	Version	D mm	H1 mm	H2 mm	H3 mm	S mm				€
401114001	1"1/4	-	dx	56	25,5	13,6	4	40	158	50	4800	2,12
401114002	1"1/4	-	sx	56	25,5	13,6	4	40	158	50	4800	2,12
401114141	1"1/4	1/4"	dx	56	25,5	13,6	4	40	156	50	4800	2,33
401114142	1"1/4	1/4"	sx	56	25,5	13,6	4	40	156	50	4800	2,33
401114381	1"1/4	3/8"	dx	56	25,5	13,6	4	40	154	50	4800	2,33
401114382	1"1/4	3/8"	sx	56	25,5	13,6	4	40	154	50	4800	2,33
401114121	1"1/4	1/2"	dx	56	25,5	13,6	4	40	148	50	4800	2,40
401114122	1"1/4	1/2"	sx	56	25,5	13,6	4	40	148	50	4800	2,40
401114341	1"1/4	3/4"	dx	56	25,5	13,6	4	40	146	50	4800	2,69
401114342	1"1/4	3/4"	sx	56	25,5	13,6	4	40	146	50	4800	2,69
401114101	1"1/4	1"	dx	56	25,5	13,6	4	40	130	50	4800	5,51
401114102	1"1/4	1"	sx	56	25,5	13,6	4	40	130	50	4800	5,51

La garanzia della tenuta dei tappi vale soltanto con le guarnizioni consigliate da RM.
 The guarantee of plugs seal is valid only with the recommended gasket by RM.

G 10 11



103




TAPPO VERNICIATO SU BASE ZINCATA SERIE 1" CON FLANGIA PIANA Ø 42

- GALVANIZED AND PAINTED PLUG RANGE 1" WITH PLANE FLANGE Ø 42
- VERZINKT UND LACKIERTE STAHLSTOPFEN 1" MIT GLATTFLANSCH Ø 42
- BOUCHON RADIATEURS GALVANISÉ ET VERNIS, SERIE 1" BRIDE PLATE Ø 42
- TAPÓN GALVANIZADO/PINTADO SERIE 1" CON BRIDA Ø 42 PLANA

THREAD: ISO 228/1 (ex DIN 259)
USE: radiatori alluminio / aluminum radiators

RECOMMENDED SEAL: senza amianto/asbestos free
 art. 950/A sp. 2 mm

COLOUR: RAL 9010

CODE	A inch	B inch	Version	D mm	H1 mm	H2 mm	H3 mm	S mm				€
103100001	1"	-	dx	42	22,6	12,6	4	28	103	40	7280	1,26
103100002	1"	-	sx	42	22,6	12,6	4	28	103	40	7280	1,26
103100181	1"	1/8"	dx	42	22,6	12,6	4	28	100	40	7280	1,48
103100182	1"	1/8"	sx	42	22,6	12,6	4	28	100	40	7280	1,48
103100141	1"	1/4"	dx	42	22,6	12,6	4	28	96	40	7280	1,48
103100142	1"	1/4"	sx	42	22,6	12,6	4	28	96	40	7280	1,48
103100381	1"	3/8"	dx	42	22,6	12,6	4	28	92	40	7280	1,48
103100382	1"	3/8"	sx	42	22,6	12,6	4	28	92	40	7280	1,48
103100121	1"	1/2"	dx	42	22,6	12,6	4	28	89	40	7280	1,72
103100122	1"	1/2"	sx	42	22,6	12,6	4	28	89	40	7280	1,72
103100341	1"	3/4"	dx	42	22,6	12,6	4	32	72	40	7280	2,63
103100342	1"	3/4"	sx	42	22,6	12,6	4	32	72	40	7280	2,63

La garanzia della tenuta dei tappi vale soltanto con le guarnizioni consigliate da RM.
 The guarantee of plugs seal is valid only with the recommended gasket by RM.